

LIGHT ON! 900 LIGHT SYSTEM USER MANUAL

safety instructions

- Never look directly into this high power light. Never shine this light directly into anyone's eyes. Be courteous, dim your light and point it safely to the ground when in proximity of others.
- Do not store the batteries in the power pack until ready for use. This will prevent any situation where the light is inadvertently turned on.
- Do not mount the battery pack to the bike if the light head is mounted to your helmet!
- The light head housing will become warm to the touch after prolonged use. Moving air is used to cool the light head. If the air is not moving, the light head will get hot. The light system will shut down to half power if the temperature gets too hot. It will then return to full power after cooling to a more normal temperature.
- The light will shut-off instantly when the batteries run out of power! Always use a back-up light when riding

operation

- Fully charge your batteries before initial use.
- Only use 18650 Li-ion protected batteries. The batteries must be protected from overcharging and over discharging.
- The rotary switch has 3 positions. Full Counter Clock Wise is Off, Middle is Half power, and Full Clock Wise is Full power.
- The light will shut-off instantly when the batteries run out of power!
- The light will automatically switch from Full to Half if the temperature gets too hot. This should not happen if you are moving. Moving air is used to cool the unit.
- **Full power** is 900 lumens of LED light and will run for 2 hours.
Low power is 450 lumens and will run for 4 hours.
- The **Low battery indicator** will trigger when the batteries are low on power. There will be 15 minutes at Full power or 30 minutes at Half power remaining.

LIGHT ON! LLC
20624 SW Cooper Ridge, Beaverton OR 97007
1-877-480-3456
lightonlights.com

Mounting

Power Pack Mounting:

The Power pack is designed to be mounted onto a backpack shoulder strap, water bottle cage, or horizontal bike frame tube (top tube). Two smaller Velcro straps are provided for power cable routing.

Handlebar mounting:

The mount is designed to allow easy movement on the handlebar so the beam pattern can be aimed higher or lower as needed while riding. The beam pattern can also be pivoted down to avert it from the eyes of other riders.

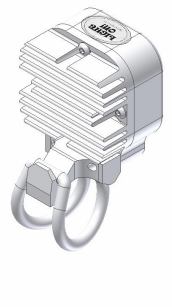
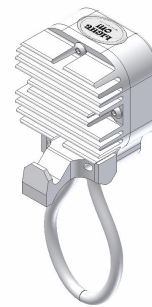
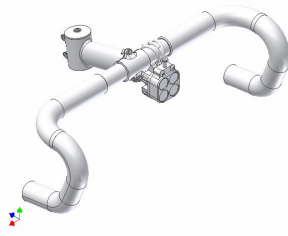
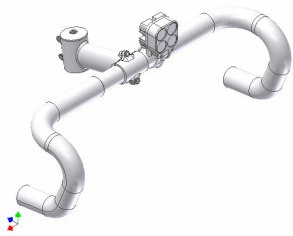
Three O-rings are provided for fitting to different size handlebars. The largest O-ring is for 1-1/4" diameter

Bars, the middle O-ring is for 1" diameter bars, the smallest O-ring is for extra gripping on 1" diameter bars.

Extra gripping power can be achieved by wrapping the handlebar with handlebar tape.

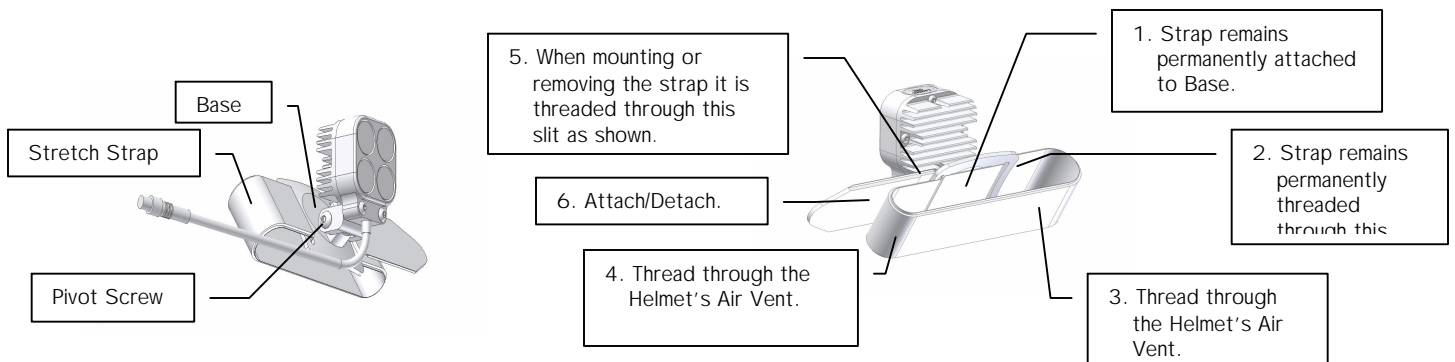
The Smart Mount system allows flexibility in mounting position.

The bike light head may be mounted to sit on top of the handlebars or may be dropped below.



Helmet Mounting: (Optional)

The light weight and compact size of the LED Head allows mounting on the front area of most helmets. This gives better overhead clearance than a top helmet mount position. The mount is designed to allow easy movement so the beam pattern can be aimed higher or lower as needed while riding. The beam pattern can also be pivoted down to avert it from the eyes of other riders. The pivot screw should be snug enough to allow movement but not so tight that movement is prevented. The enclosed Allen key is for adjustment of this pivot screw as necessary. The Velstretch strap can be cut to length as needed and attached to the Velcro hook pad on the base.



Specifications

Weight:

LED light head and handlebar mount	105 grams
Total mounted weight	550 grams

Brightness and runtimes:

Full Power	900 Lumens / 2 hours Total
Half Power	450 Lumens / 4 hours Total

After the low battery indicator comes on (included in total above):

	900 Lumens / 15 minutes
	450 Lumens / 30 minutes

Batteries:

(4) Rechargeable Li-ion cells, size 18650 with protective circuit 2,500 mAh.
Typical life 300 to 500 charging cycles.
2 year life expectancy at 100% capacity.

LED:

Cree XR-E Q5

Charger:

Typical 6 hour charge time
International wall voltage

Power pack

- Due to risk of fire, never store the light with the batteries installed. The light may be accidentally turned on and enough heat can be generated to start a fire.
- The power pack is the power conditioner for the LED's. LED's will not run directly from a battery, so never try to construct your own power pack.
- Fully charge the batteries before storing them.
- Fully discharging the batteries will not hurt this system.
- Always dry out the battery pack if it is exposed to water. Keep the case open to allow it to air dry.
- Only use 18650 Li-ion protected batteries. The batteries must be protected from overcharging and over discharging.
- If (2) or more batteries are backwards then the light won't turn on. However, If only (1) is backwards then the light will turn on and you will experience an unusually short runtime.

charging system

Your LIGHT ON! system is supplied with 2 Ultrafire ® Charger. The charger accepts US/Canada/Mexico and International voltages 100-240 volts AC, 50-60 Hz.

- This charger is only suitable for 18650 Lithium Ion Batteries.
- These 2500 mAh batteries will take about 6 hours to charge.
- Indicator light:
 - Solid red during initial 1 minute period.
 - Red with quick green flash during charging.
 - Solid green when fully charged.
- Charging must be performed in a fire proof area and on a fire proof surface.
- Never leave charger unattended while charging.
- Unplug the charger from the power socket when it is not in use.
- Batteries must be installed in the correct orientation.
- Batteries will normally get warm while charging. Stop charging if the batteries get extremely hot.
- Do not contact metal objects with the charger.

warranty

LIGHT ON! LLC provides a two year limited warranty on all components. If a problem occurs in normal use and no alterations or abuse to the product have been determined to have taken place, we will repair or replace that component. Please contact LIGHT ON! LLC for return authorization. You will need to provide contact information, date of purchase, and description of issue.

LIGHT ON! LLC
20624 SW Cooper Ridge, Beaverton OR 97007
1-877-480-3456
lightonlights.com